

The Nottingham

2 & 3 Pennycress Court, 1 Bluebell Court &, 4 & 6 Juniper Court
One bedroom apartment — private balcony

Available: 13



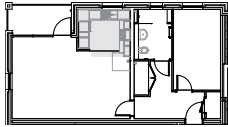
Part of



07435 995071

brioretirement.co.uk

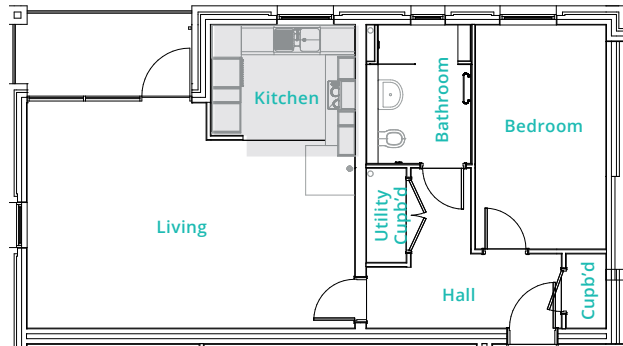
The Nottingham



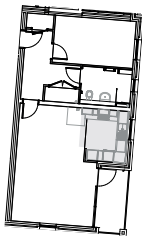
2 Pennycress Court

Ground Floor: Apartment 2

First Floor: Apartment 6



Typical Layout

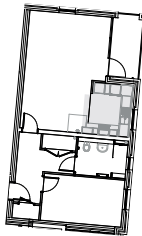


3 Pennycress Court

Ground Floor: Apartment 2

First Floor: Apartment 6

Second Floor: Apartment 9

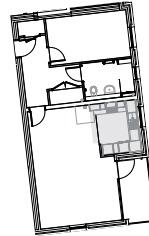


1 Bluebell Court (65.7m²)

Ground Floor: Apartment 2

First Floor: Apartment 6

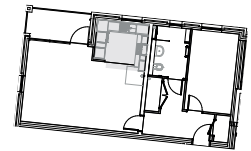
Second Floor: Apartment 9



4 Juniper Court

Ground Floor: Apartment 2

First Floor: Apartment 5



6 Juniper Court

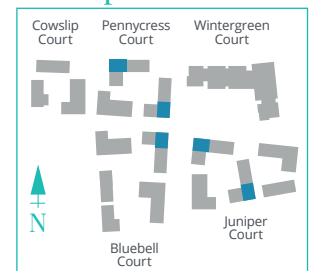
Ground Floor: Apartment 3

First Floor: Apartment 6

Second Floor: Apartment 9

	m	ft
Living	6.60 x 4.50	21'8" x 14'9"
Kitchen	2.90 x 2.30	9'6" x 7'7"
Bedroom	4.50 x 2.65	14'9" x 8'8"
Bathroom	2.75 x 2.05	9'0" x 6'9"
Total	65.8m²	708.3ft²

Block plan



Please note: Although every care has been taken to ensure the accuracy of the information provided within this sale sheet, the contents do not form part of, or constitute any representation, warranty or contractual agreement. These particulars have been prepared for the convenience of interested purchasers, and the information provided is intended as a preliminary guide only. The images used are provided for illustrative purposes only and may not reflect the actual size, layout or external finishes of the completed units.