

The Wistley

2 Bluebell Court & 1 Juniper Court
Three bedroom apartment — private balcony

Available: 4



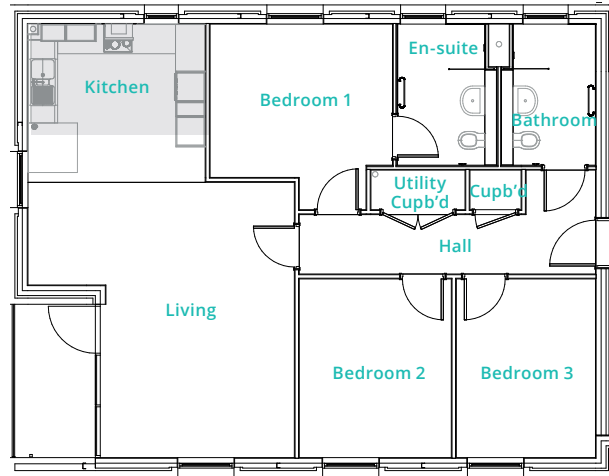
Part of



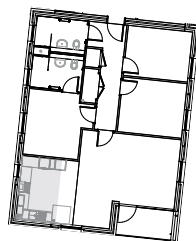
01451 888082

brioretirement.co.uk

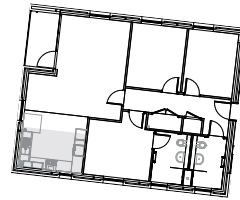
The Wistley



Typical Layout



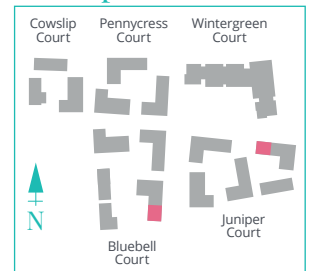
2 Bluebell Court
Ground Floor: Apartment 3
First Floor: Apartment 4



1 Juniper Court
Ground Floor: Apartment 1
First Floor: Apartment 4

	m	ft
Living	5.50 x 3.80	18'1" x 12'5"
Kitchen	3.55 x 3.20	11'8" x 10'6"
Bedroom 1	3.65 x 3.05	12'0" x 10'0"
En-suite	2.85 x 1.95	9'4" x 6'5"
Bedroom 2	3.55 x 3.05	11'8" x 10'0"
Bedroom 3	3.55 x 2.80	11'8" x 9'2"
Bathroom	2.85 x 1.85	9'4" x 6'1"
Total	95.0m²	1022.6ft²

Block plan



Please note: Although every care has been taken to ensure the accuracy of the information provided within this sale sheet, the contents do not form part of, or constitute any representation, warranty or contractual agreement. These particulars have been prepared for the convenience of interested purchasers, and the information provided is intended as a preliminary guide only. The images used are provided for illustrative purposes only and may not reflect the actual size, layout or external finishes of the completed units.